

**Display Flash**  
one-up communication



Presents





## Where do people go ?

Shoppers usually tend to spend more time in shopping centers. Average shopper spend an hour per major shopping and make 1.5 major trips per week.





## What do they buy ?

Two-thirds of purchase decisions are made in-store. More than 70% of shoppers make a decision to purchase goods after they entered the store.





## Why Instant Display at Retail ?

- ❑ Shoppers can be easily motivated to purchase something by images, keywords, phrases and recognizable icons in stores;
- ❑ Displays at stores are clearly the main reason driving shoppers to make decision to buy something in-store;







## Why Display Flash ?

□ **Automatic** : it can be assembled in a second without following complex guides;

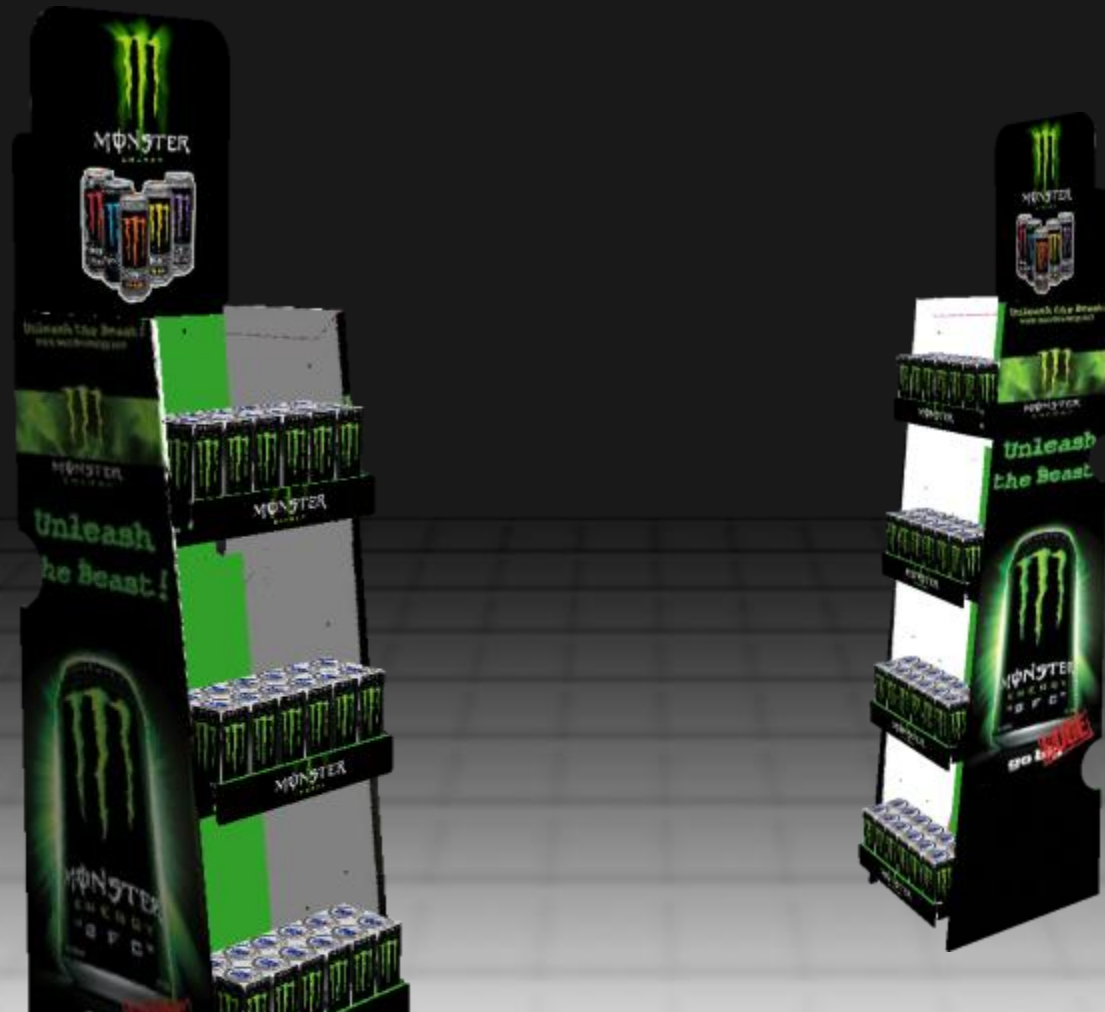


■ **Automatic**



# Why Display Flash ?

□ **Visual** : any images, keywords and phrases can be used on it in order to motivate shoppers;



- Automatic
- Visual



## Why Display Flash ?

□ **Specific** : displays will be peculiar to your company. With our Branded displays other companies won't be able to use your displays.

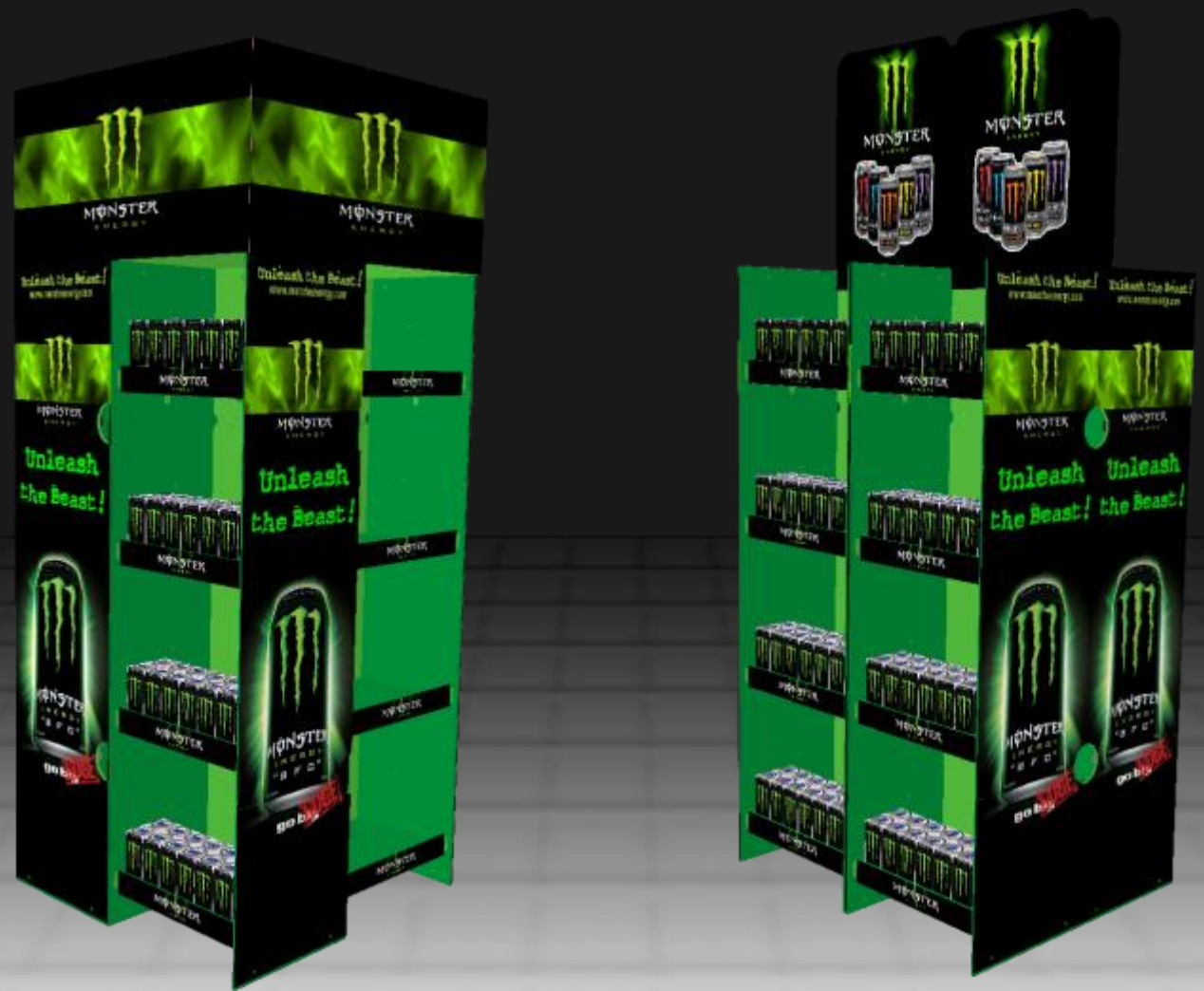


- Automatic
- Visual
- Specific



# Why Display Flash ?

□ Strong : Branded Rack Flash can hold up to 60 kg;



- Automatic
- Visual
- Specific
- Strong



# Why Display Flash ?

□ Light : It is made of corrugated:



- Automatic
- Visual
- Specific
- Strong
- Light

## Why Display Flash ?

□ **Imaginative** : It can be designed in any size and in any shape in accordance with your needs;



- Automatic
- Visual
- Specific
- Strong
- Light
- Imaginative

## Why Display Flash ?

□ **Stimulant** : It is designed to attract the attention of shoppers;



- Automatic
- Visual
- Specific
- Strong
- Light
- Imaginative
- Stimulant



## Why Display Flash ?

□ **Practical** : it can be located at anyplace in order to draw attention of consumers.



- Automatic
- Visual
- Specific
- Strong
- Light
- Imaginative
- Stimulant
- Practical



## Why Display Flash ?

□ **Simple Logistic** : it is light and can be easily folded which makes transportation and storage very simple.



- Automatic
- Visual
- Specific
- Strong
- Light
- Imaginative
- Stimulant
- Practical
- Simple Logistic



## Why Display Flash ?

□ **Innovative** : various products can be advertised at the same time;



- Automatic
- Visual
- Specific
- Strong
- Light
- Imaginative
- Stimulant
- Practical
- Simple Logistic
- Innovative



## Why Display Flash ?

□ **Environmental Friendly:** Display Flash Displays are also environmental friendly because our display are made of recyclable materials ;



- Automatic
- Visual
- Specific
- Strong
- Light
- Imaginative
- Stimulant
- Practical
- Simple Logistic
- Innovative
- Environmental Friendly



## Why Display Flash ?

□ **Durable** : it is resistant against humidity and it is able stay up long time;



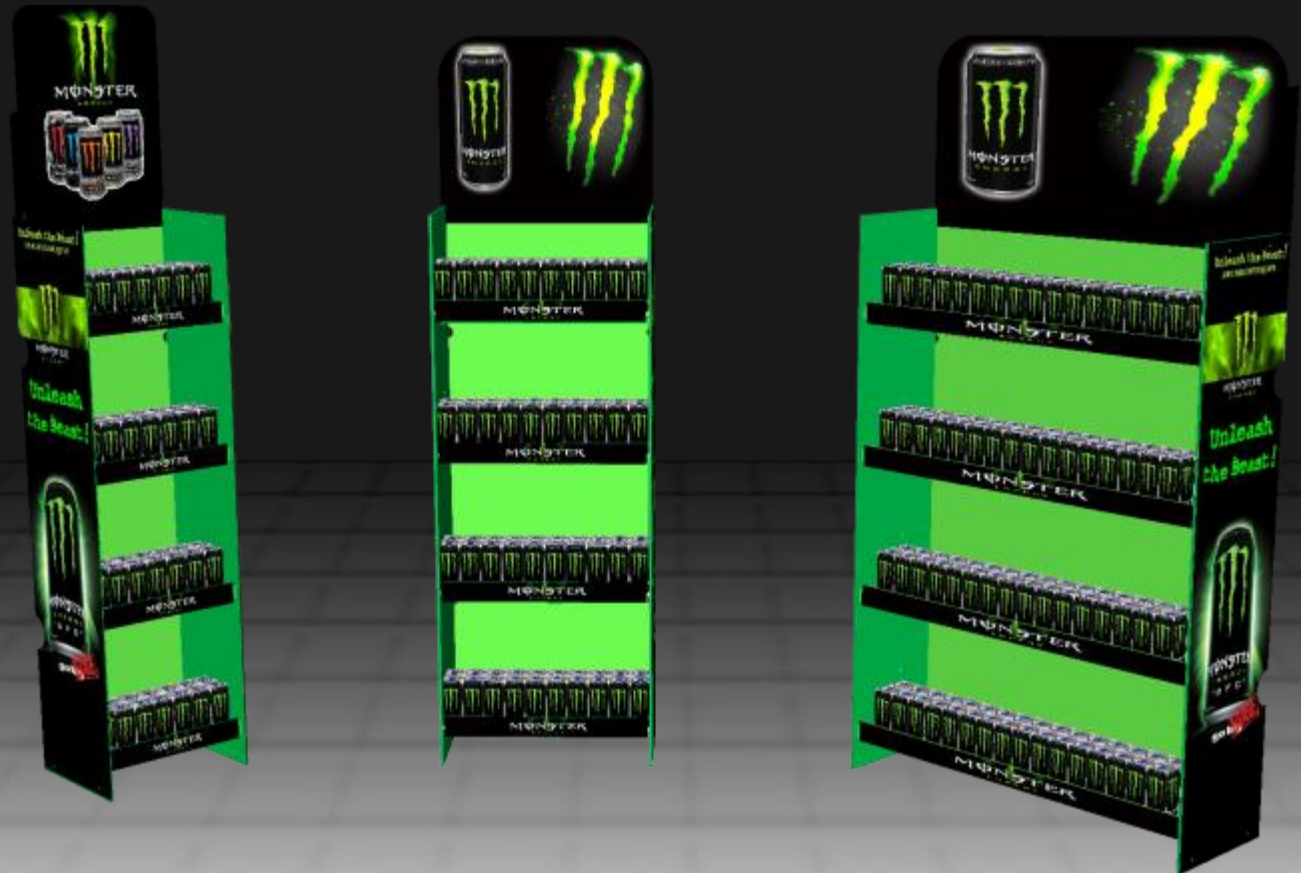
- Automatic
- Visual
- Specific
- Strong
- Light
- Imaginative
- Stimulant
- Practical
- Simple Logistic
- Innovative
- Environmental Friendly
- Durable



## Why Display Flash ?

❑ **Disposable:** It can be replaced with a new one whenever your marketing strategy is changed;

- Automatic
- Visual
- Specific
- Strong
- Light
- Imaginative
- Stimulant
- Practical
- Simple Logistic
- Innovative
- Environmental Friendly
- Durable
- Disposable





## Why Display Flash ?

□ **Low Cost** : It can be replaced with a new one whenever your marketing strategy is changed;

- Automatic
- Visual
- Specific
- Strong
- Light
- Imaginative
- Stimulant
- Practical
- Simple Logistic
- Innovative
- Environmental Friendly
- Durable
- Disposable
- Low Cost





## Why Display Flash ?

❑ **Lucrative** : It can be replaced with a new one whenever your marketing strategy is changed;

- Automatic
- Visual
- Specific
- Strong
- Light
- Imaginative
- Stimulant
- Practical
- Simple Logistic
- Innovative
- Environmental Friendly
- Durable
- Disposable
- Low Cost
- Lucrative

